

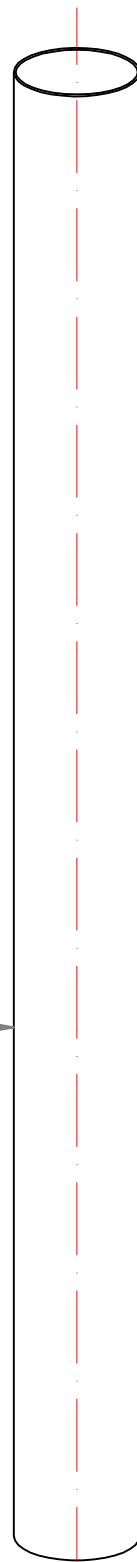
WARNING

THE SPIRAL STAIRCASE COMPONENTS MAY PRESENT SHARP EDGES WHICH WE HAVE CHOSEN TO MAINTAIN FOR COST SAVING PURPOSES – WE THEREFORE RECOMMEND WEARING ADEQUATE WORK GLOVES WHEN HANDLING THEM DURING ASSEMBLY. WE APOLOGISE FOR THIS INCONVENIENCE AND LOOK FORWARD TO HAVING YOU AMONG OUR DISTINGUISHED CLIENTS.

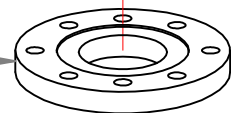
ASSEMBLY INSTRUCTIONS

FOR SPIRAL STAIRCASE ASSEMBLY FOLLOW INSTRUCTIONS BELOW:

1. WITH SHUTTER OR OTHER ADEQUATE LOCKING MECHANISM, WELD TYPE UNI 2278 DN 100 FLANGE (2) ONTO TUBE, Ø114 mm AND LENGTH EQUAL TO STAIRCASE LENGTH PLUS 800mm (1)



1



BILL OF MATERIAL

No.	NAME	CODE
1	E.U. Ø114.3x2 mm TUBE	4.1610.4
2	UNI 2278 DN100 FLANGE	4.2278.100

Date

-

Code

4.1610

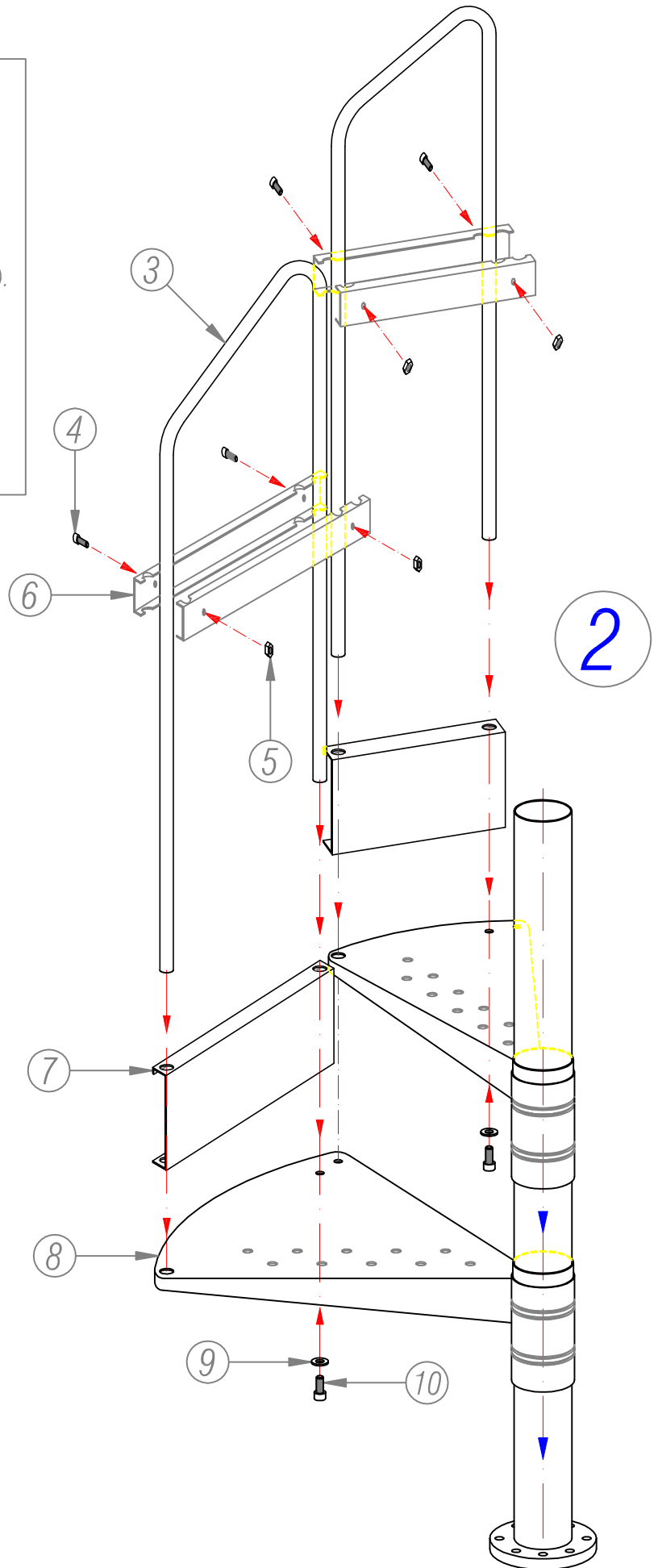
-

Description

MODULAR SPIRAL STARCASE – “LA RAPIDA”

ASSEMBLY INSTRUCTIONS

2. INSERT ALL STEPS INTO TUBE (8) AS PER DRAWING.
 3. INSERT SKIRTING (7) INTO HANDRAIL, LOCK HANDRAIL ONTO STEP USING THE SCREWS PROVIDED (9 AND 10).
 4. ASSEMBLE CROSS BEAM (6) ONTO HANDRAIL USING THE SCREWS PROVIDED (4 AND 5).
- AFTER ASSEMBLING ALL STEPS, THE STAIRCASE IS PUT INTO TRACTION BY APPLYING FINAL COMPONENTS, THREE FLANGES AND M12 ROD PROVIDED.



THE SPIRAL STAIRCASE IS MADE ENTIRELY OF STEEL TYPE AISI 304.
 THE STAIRCASE IS DESIGNED AND BUILT FOR LIGHT-DUTY SERVICE ONLY AND CAN THEREFORE SUSTAIN STRUCTURAL LOADS BUT IS NOT SUITABLE FOR DYNAMIC STRUCTURAL LOADING (IMPACT AND VIBRATIONS).
 FOR REFERENCE ONLY, PLEASE NOTE THE FOLLOWING VERTICAL LOADING DATA:

- VERTICAL, DISTRIBUTED: 400 daN/m²
- VERTICAL, CONCENTRATED: 200 daN/m² (AS AN ALTERNATIVE TO THE ABOVE)
- HORIZONTAL, DISTRIBUTED: 100 daN/m² (ON HANDRAIL).

BILL OF MATERIAL

No.	NAME	CODE
3	HANDRAIL	4.1610.2
4	M8x35 mm SCREW	4.912.8/35
5	M8 HEXAGONAL NUT	4.934.8
6	LONG CROSS BEAM	4.1610.7
7	SKIRTING	4.1610.12
8	STEP (210 mm PITCH)	4.1610.1
9	GROWER WASHER FOR M10	4.1751.10
10	M10x30 mm SCREW	4.912.10/30

Date

-

Code

4.1610

Description

MODULAR SPIRAL STARCASE – “LA RAPIDA”

ASSEMBLY INSTRUCTIONS

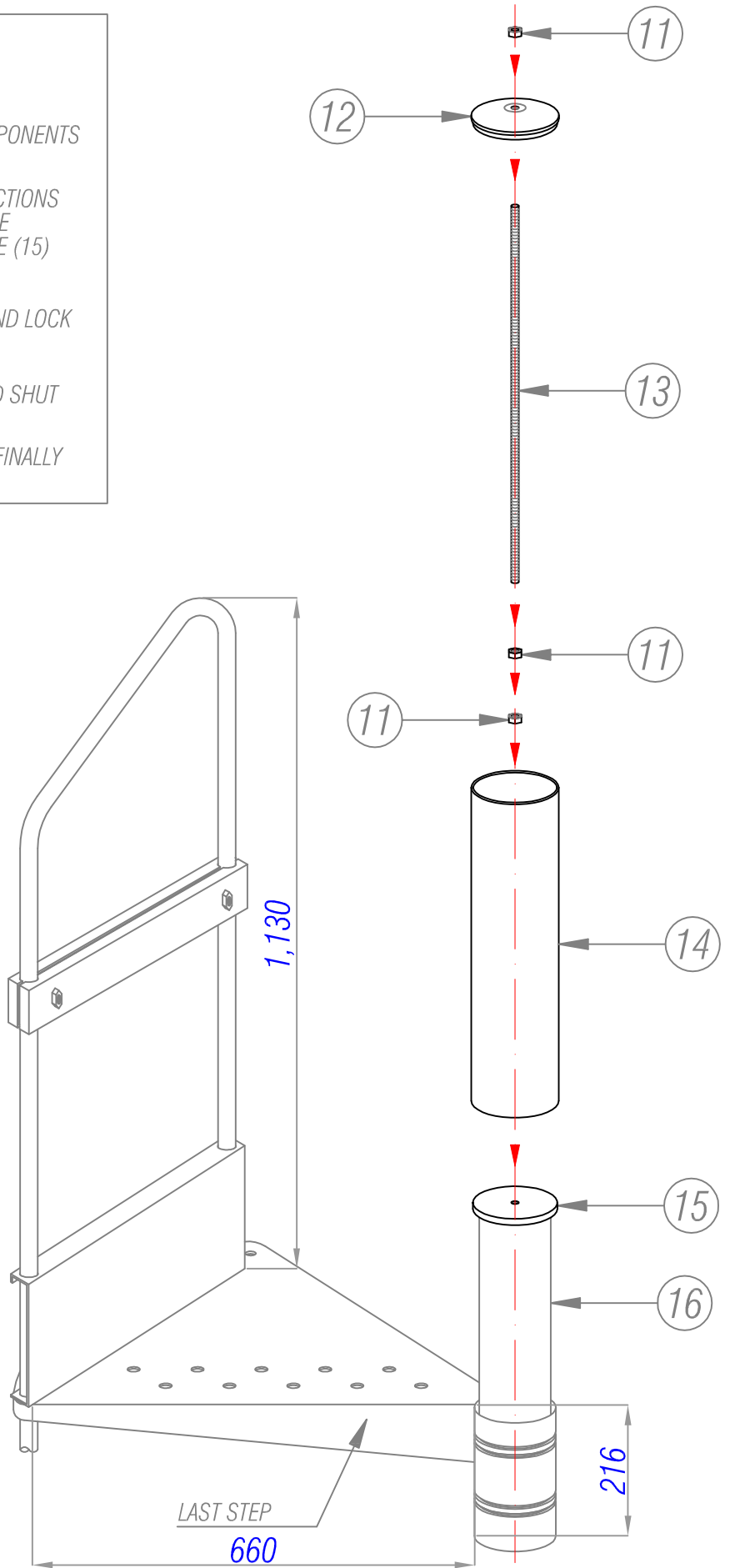
FOR ASSEMBLY OF SPIRAL STAIRCASE FINAL COMPONENTS FOLLOW INSTRUCTIONS BELOW:

5. AFTER ASSEMBLING ALL STEPS AS PER INSTRUCTIONS ABOVE, INSERT REDUCTION RING (17) INTO TUBE ADJACENT TO THE LAST STEP AND WELD FLANGE (15) ONTO Ø114.3x2 TUBE (16) AS PER DRAWING.
6. SCREW M12 ROD (13) INTO WELDED FLANGE AND LOCK WITH 2 M12 NUTS (11) PROVIDED.
7. INSERT Ø129.7 mm L=1200 mm TUBE (14) AND SHUT WITH END FLANGE (12).

THE STAIRCASE IS NOW PUT INTO TRACTION AND FINALLY LOCKED WITH M12 NUT (11).

3

BILL OF MATERIAL		
No.	NAME	CODE
11	M12 HEXAGONAL NUT	4.934.12
12	END FLANGE	4.1610.5
13	M12 THREADED ROD	4.010.12
14	E.U. Ø129 x 1.5 mm TUBE	4.003.129/15
15	INTERNAL TUBE FLANGE	4.1610.8
16	E.U. Ø114.3x2 mm TUBE	4.1610.4



Date

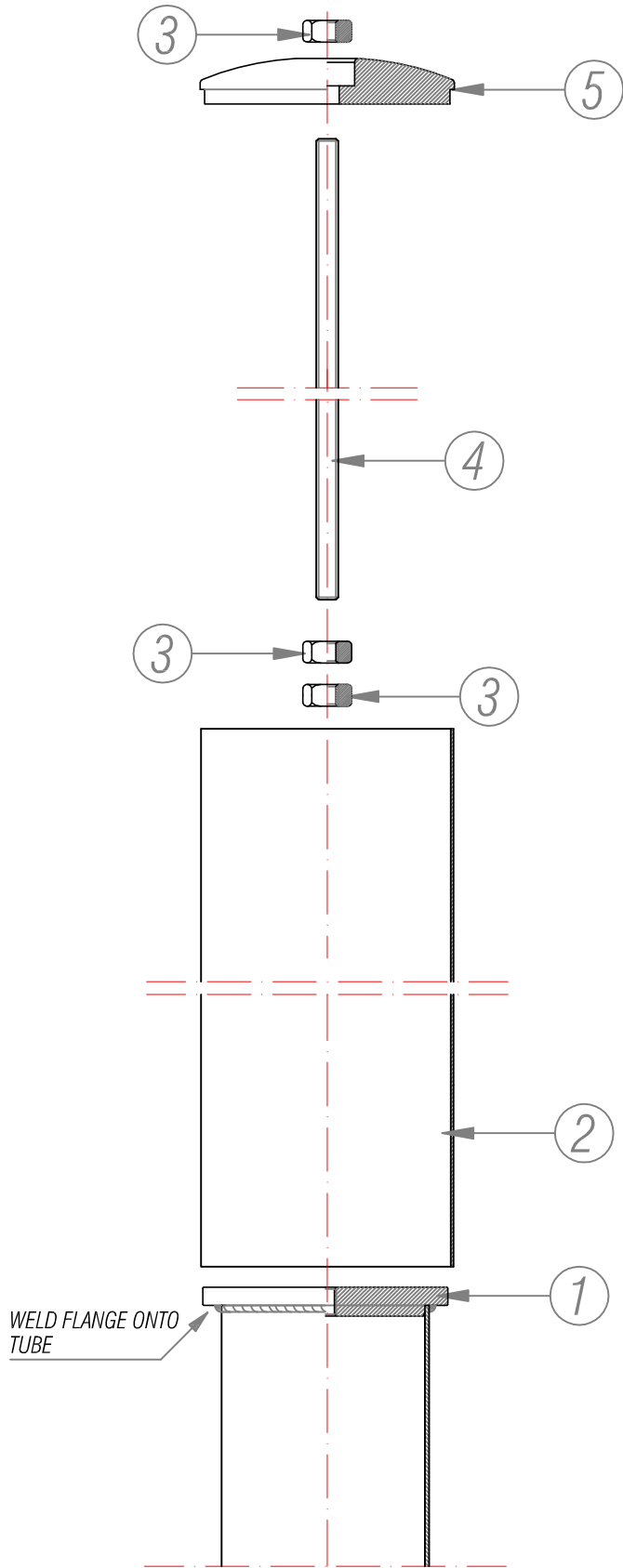
-

Code

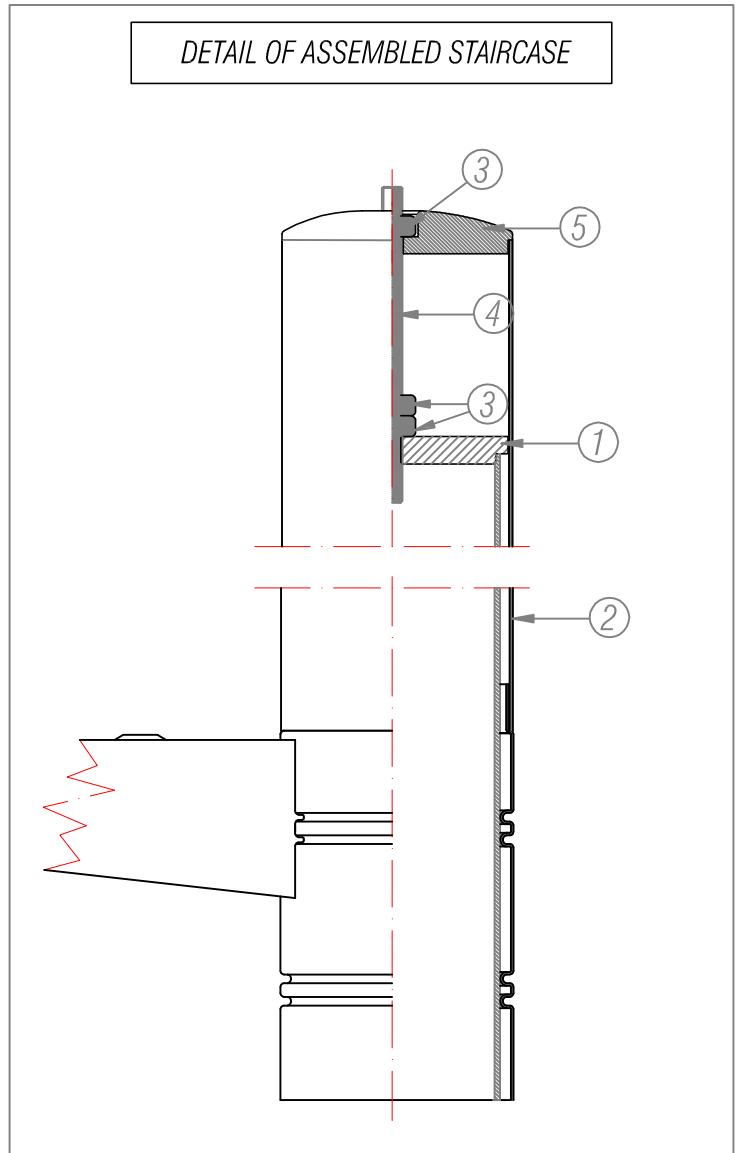
4.1610.F

Description

FINAL COMPONENTS OF MODULAR SPIRAL STARCASE – “LA RAPIDA”



BILL OF MATERIAL			
No.	NAME	Qty	CODE
1	INTERNAL TUBE FLANGE	1	4.1610.8
2	E.U. Ø129x1.5 mm TUBE	1	4.003.129/15
3	M12 HEXAGONAL NUT	3	4.934.12
4	M12 THREADED ROD	1	4.010.12
5	END FLANGE	1	4.1610.5



4

Code
4.1610.F

Description
FINAL COMPLETE TUBE FOR SPIRAL STAIRCAS

AISI 304 STEEL